

Get degree, work hard for Floridians.

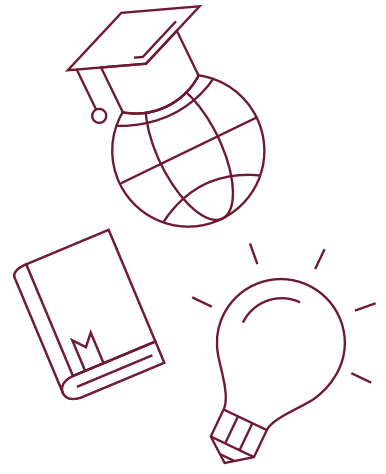


Kimberly Diaz Scott

College: Social Sciences and Public Policy

Program: Public Administration

Degree: MPA



"There is great fear in having to jump back into something that feels distant or unknown. This was my initial feeling as I started the application process for the [MPA program at Florida State University](#). I was able to overcome these fears through motivation of what the degree would mean for me. This degree is an opportunity to rise in the ranks and have more influence over policy that can improve the lives of Floridians. This means that I would be the first in my family to graduate with a master's degree, making it known that in my family, the possibilities to do and be better are endless. I hope that my collegiate career provides me the confidence and tools to lead the charge in addressing issues that are impacting our communities, from education to health care access concerns."

Kimberly graduated from Florida Gulf Coast University in the spring of 2011 with a BA in Communications and is continuing her education as an MPA graduate student at the [Florida State University Askew School of Public Administration and Policy](#), with help from a [P.E.O. Continuing Education Grant](#). Kimberly began her career working for the Florida House of Representatives assisting constituents with multiple matters from health to home insurance. From there, she transitioned to her first exposure of a competitive state senate race managing the field, policy and logistics. With a successful win, Kimberly had the pleasure of serving the Florida Senate as chief of staff to the office. She also had the opportunity to work on the 2014 Florida gubernatorial race as the Central Florida Regional Political Director. She transitioned into the non-profit sector as the Legislative Representative for the Florida Alliance of Planned Parenthood Affiliates, proudly working to protect access to reproductive health in the great state of Florida. Outside of the legislative dome, Kimberly is also the director of the Tallahassee Chapter of New Leaders Council, working to recruit and train young progressive leaders, and of the FSU's [Public Administration Graduate Association](#), working to enhance the program and represent graduate's experiences.